



Trenta™  
Stone Collection

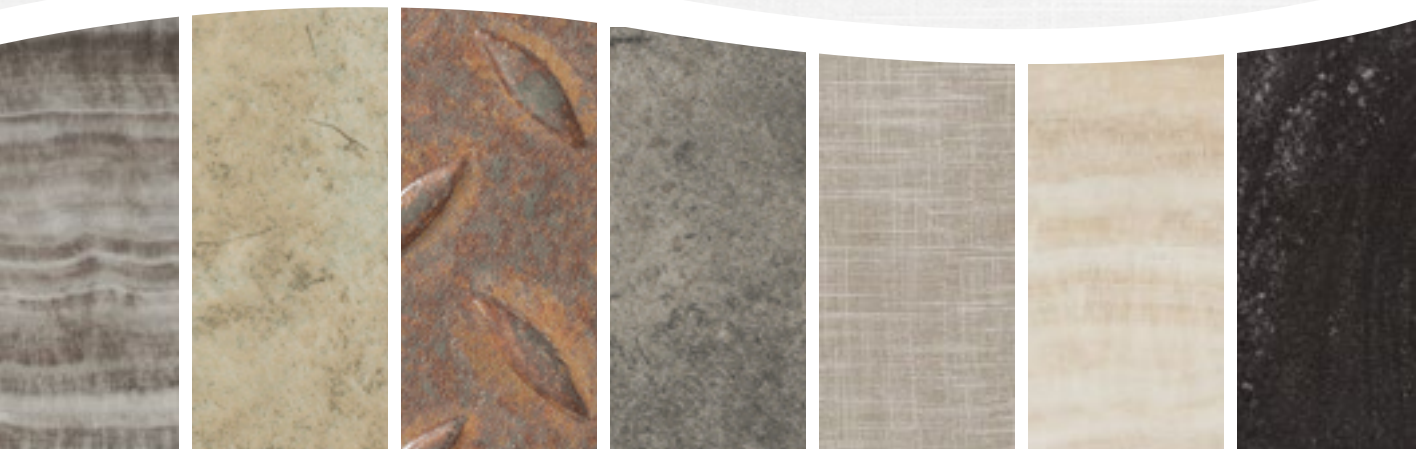
## Trenta™ Collection

---

Trenta offers diverse, naturally dramatic designs of distinctive beauty. From smoked ash to zebra wood, travertine to weathered sandstone, linen to metallics – explore the possibilities of premium LVT through Trenta's richly textured visuals.

Trenta is created for ultimate flexibility of design. Various sizes and visuals complement a range of interior spaces, while a 30 mil wear layer and tough urethane finish allow for heavy traffic in a variety of commercial settings. Select wood visuals are available in 4" x 36", 7.25" x 48" and 9" x 48", or choose emulations of stone and other unique materials available in 12" x 24", 18" x 18" and 18" x 36".

Featuring a 20-year commercial warranty, Trenta's fusion of ultra-modern character and natural beauty coordinates perfectly with other Mohawk Group flooring.











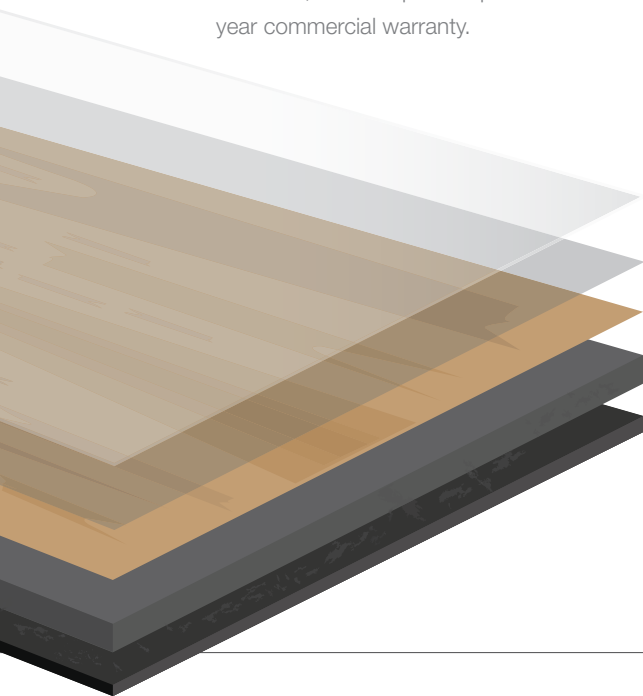
## Beautifully Strong

---

With a name that means “thirty,” Trenta’s substantial 30 mil wear layer exceeds industry standards, bringing modern elegance to spaces that require heavy commercial loads and traffic. A commercial grade urethane finish protects the visual for sustained dramatic impact, while polish-optional maintenance makes Trenta easy to care for over the life of the installation.

### High Performance Resilient Tile

**Construction:** Trenta features a 30 mil commercial wear layer and is coated with Commercial Grade Urethane, which is polish-optional for versatile, cost-effective maintenance. Trenta is backed by a 20 year commercial warranty.



- Commercial Grade Urethane
- Heavy Commercial Wear Layer
- Decorative Print Film
- Commercial Base
- Stabilizing Back Layer

## Trenta Tile 18" x 18"



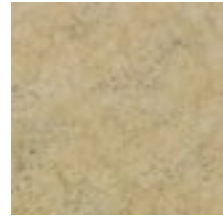
Cork  
241 Classic Cork



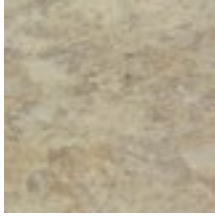
Egyptian Limestone  
846 Fresco



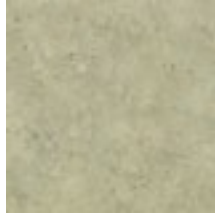
Egyptian Limestone  
959 Cool Concrete



Slate  
263 Beacon



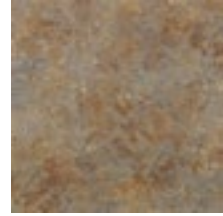
Slate  
372 Desert Glow



Slate  
868 Khaki



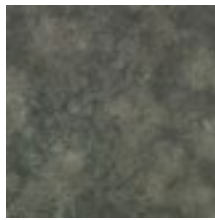
Slate  
928 River Rock



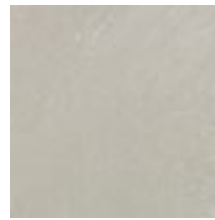
Slate  
153 Adobe



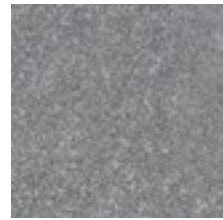
Slate  
368 Basalt



Slate  
968 Flint



Weathered Sandstone  
251 Sand



Weathered Sandstone  
927 Nickel



Weathered Sandstone  
969 Meteor

## Styled By Nature

Trenta's colorways and textures emulate a wealth of natural stone facades, from boldly striated travertine to subtle, weathered sandstone. More unique visuals include crosshatched linens and metallics. Three sizes of tile – 12" x 24", 18" x 18" and 18" x 36" (style dependent) – ensure the right fit for a range of spaces, for total design flexibility within a single collection.

**Trenta Tile 12" x 24"**



Fabric Fusion  
138 Sheer Linen



Fabric Fusion  
945 Silver Screen



Luxe Travertine  
837 Oyster



Luxe Travertine  
958 Windsor



Luxe Travertine  
358 Hearth

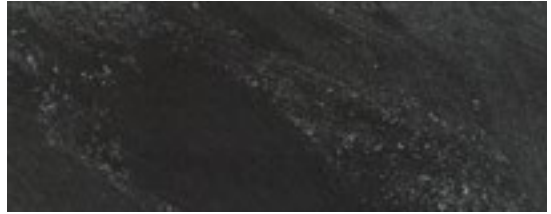
**Trenta Tile 18" x 36"**



Weathered Sandstone  
251 Sand



Weathered Sandstone  
927 Nickel



Weathered Sandstone  
969 Meteor



Metallic  
373 Rust



Metallic  
987 Stallion





## Specifications

Style Name / Number

Tile 12"x24" (C0053); Tile 18"x18" (C0054);

Brand

Tile 18"x36" (C0055)

Product Type

Mohawk Group - Hard Surface

Resilient Tile



### DESIGN

Overall Gauge

.12" (3mm)

Wear Layer

30 mil (0.7mm)

Finish

Commercial Grade Urethane

Colors Available / Size

Each color only available in size shown:

12"x24" - 5 colors

18"x18" - 13 colors

18"x36" - 5 colors

Packaging

12"x24" - 36 sf per carton; 18 pcs per carton

18"x18" - 36 sf per carton; 16 pcs per carton

18"x36" - 36 sf per carton; 8 pcs per carton

Installation

Glue Down

Recommended Adhesive

M950 Acrylic, M700 Pressure Sensitive



### PERFORMANCE

Construction

Heavy Commercial Grade Resilient Tile

Classification

ASTM F1700 - Class III, Type A - Smooth, Type B - Embossed

Squareness

ASTM F2055 - Passes - 0.010 in. max

Size and Tolerance

ASTM F2055 - Passes -  $\pm 0.016$  in. per linear foot

Thickness

ASTM F386 - Passes - Nominal  $\pm 0.005$  in.

Flexibility

ASTM F137 - Passes - 1.0 inch mandrel, no cracks or breaks

Dimensional Stability

ASTM F2199 - Passes -  $\leq 0.020$  in. per linear foot

Static Load Limit

ASTM F970 - Passes, modified - 2500 psi

Residual Indentation

ASTM F1914 - Passes - Average less than 8%

Slip Resistance

ASTM D2047 - Passes -  $> 0.6$  Dry

Resistance to Chemicals

ASTM F925 - Passes - No Change

Resistance to Light

ASTM F1515 - Passes -  $\Delta E \leq 8$

Resistance to Heat

ASTM F1514 - Passes -  $\Delta E \leq 8$

Critical Radiant Flux

ASTM E648 - Passes -  $\geq 0.45$  watts/cm<sup>2</sup>, Class 1

Smoke Density

ASTM E662 -  $< 450$

Impact Insulation Class

ASTM E989 / E492 - 59



### SUSTAINABILITY

Certification

FloorScore® Certified SCS-FS-01495



### SERVICE

Warranty

Limited 20 Year Commercial

