

# PALLAS

STIPLING

**APPLICATION**  
Upholstery

**CONTENT/SUSTAINABILITY**  
64% Polyester  
36% Recoverš Upcycled Cotton

**WIDTH**  
54 inches

**PERFORMANCE**  
Stain Repellent

**ABRASION**  
100,000 Double Rubs

**MADE IN AMERICA**

**BACKSTITCH™ COLLECTION**

## SPECIFICATION INFORMATION

### PATTERN

Application

Content

Repeat

Width

Weight

Finish/Backing

Cleaning Code\*

Warranty

Performance<sup>1</sup>

Flammability

Abrasion

### STIPLING - BACKSTITCH™ COLLECTION

Upholstery

64% Polyester  
36% Recoverš Upcycled Cotton

2-5/16" Vertical, 1-11/16" Horizontal

54"

17.15 oz. / Linear Yard

Stain Repellent / Acrylic

S

Standard (3yr)



NFPA 260, TB 117-2013

100,000 Double Rubs (Wyzenbeek)

Colors may vary slightly between dye lots. This card may show discontinued colorways.  
For current color availability, please refer to [pallastextiles.com](http://pallastextiles.com) or call 1-800-472-5527.  
\*For specific cleaning instructions, visit [pallastextiles.com/cleaning](http://pallastextiles.com/cleaning)

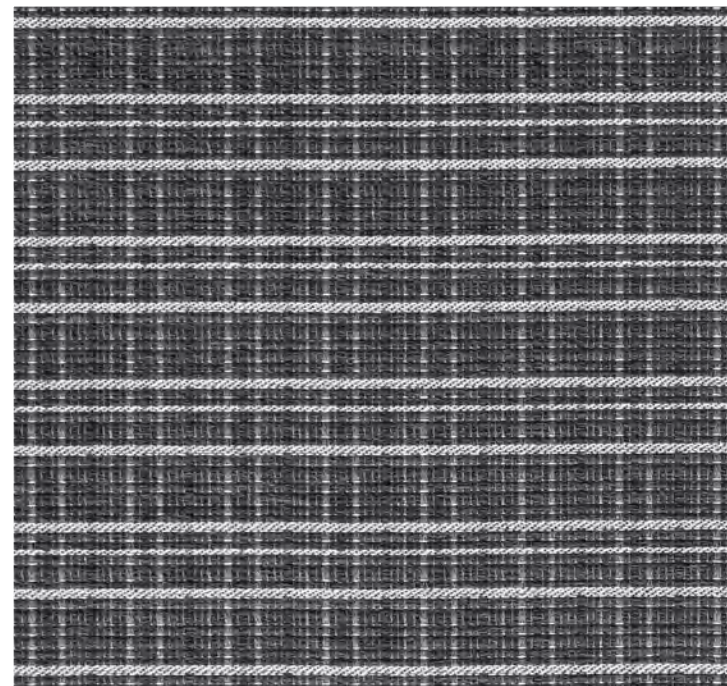


Photo for overall pattern effect only.



# PALLAS



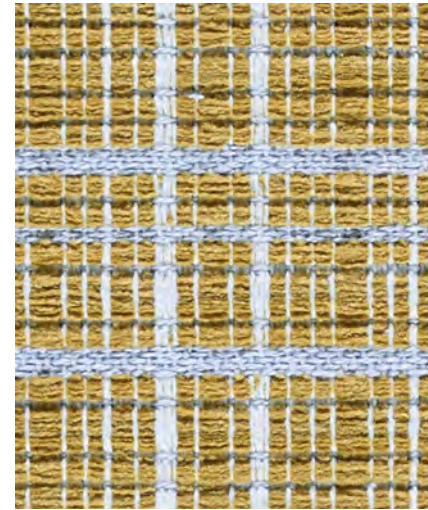
Printed on FSC® certified paper,  
using only vegetable-based inks,  
including metallics. Please recycle.

Pallas Textiles • 1330 Bellevue Street • P. O. Box 8100 • Green Bay, WI 54308-8100 • 1-800-472-5527 • [www.pallastextiles.com](http://www.pallastextiles.com)  
Pallas is a registered trademark of Krueger International, Inc.® 2020 KI All Rights Reserved. Litho in USA. PT-FF-000323  
<sup>1</sup>ACT® Registered Certification Marks

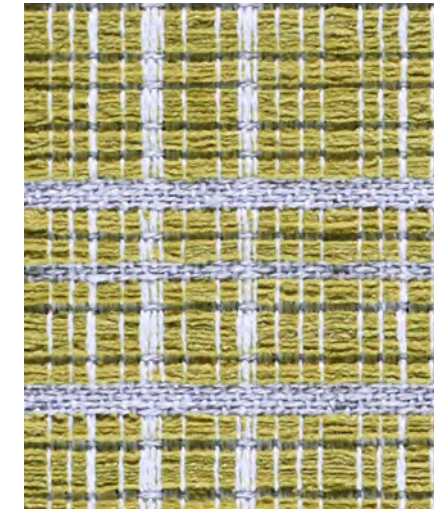
**STIPLING**  
BACKSTITCH™ COLLECTION



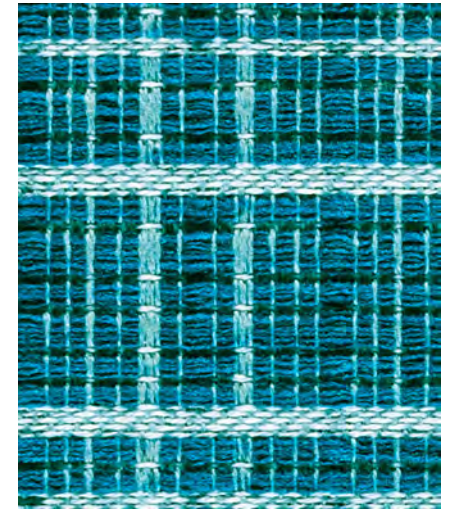
**EARTH**  
27.317.011



**MAIZE**  
27.317.099



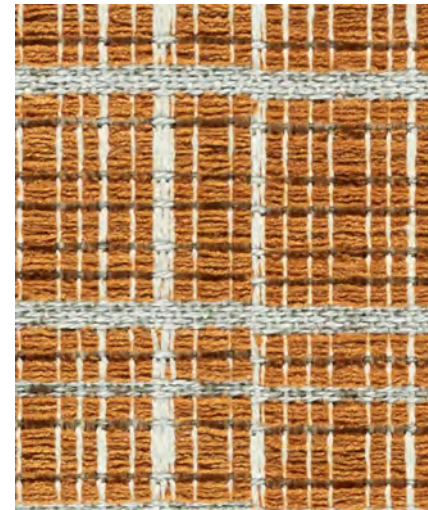
**CAST ON**  
27.317.085



**WATERMARK**  
27.317.063



**FIELDSTONE**  
27.317.032



**CLAY**  
27.317.109



**MEADOW**  
27.317.076



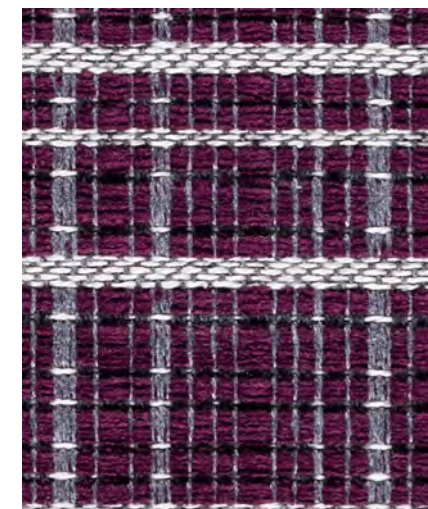
**OLD SOUL**  
27.317.021



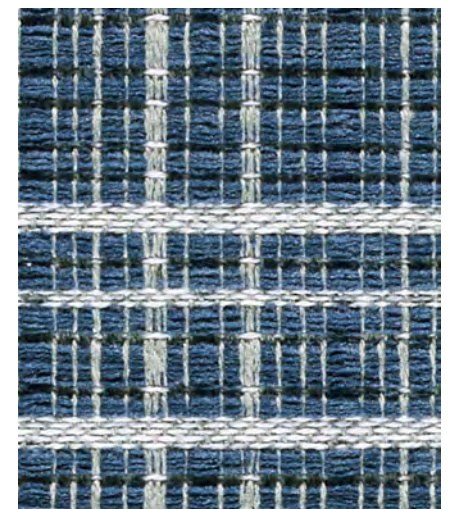
**SILHOUETTE**  
27.317.042



**TAPESTRY**  
27.317.118



**BATIK**  
27.317.127



**ROYALE**  
27.317.054